

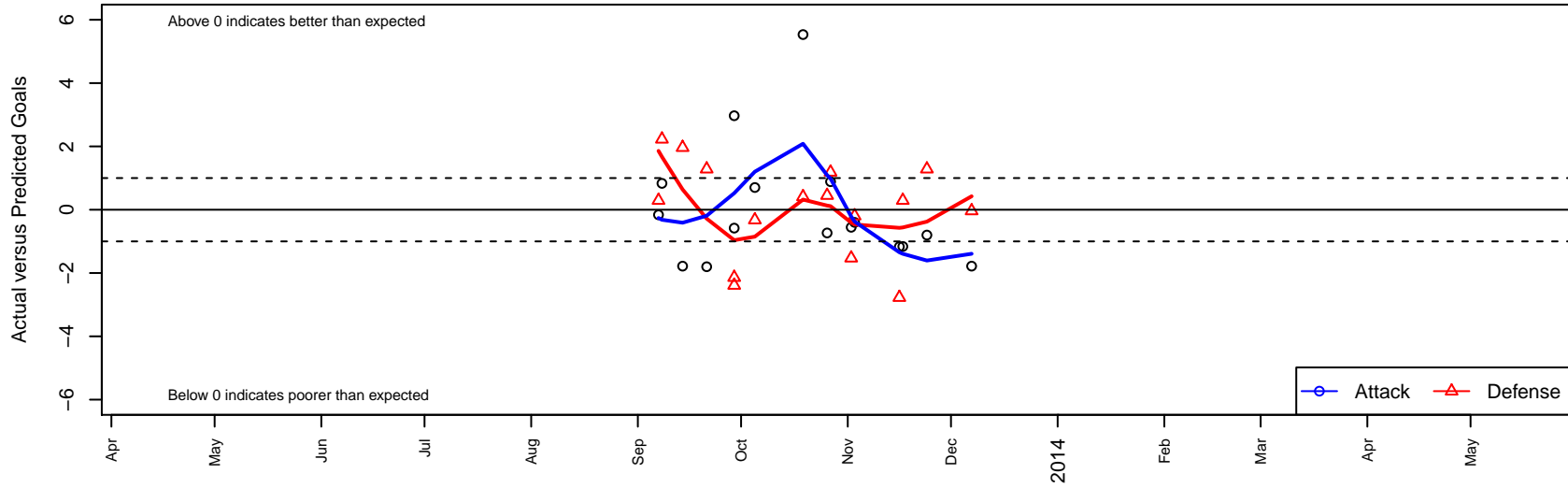
FC Los Angeles Black B02

Los Angeles, CAS
 B02 total strength=755
 attack=1.06 defense=0.69
 fall league = SCDL FI1 U11
 alt names used:
 FC Los Angeles B02 Black

Venues played:
 SCDL FI1 U11
 SoCal DL Fall Showcase Flight 1 U11



FC Los Angeles Black B02
 Dots are actual minus expected GF (blue circles) and GA (red triangles).
 Blue line is smoothed change in attack strength. Red is smoothed change in defense strength.



	date	home		away		venue	pred.home	pred.away
20571	2013-12-07	FRAM Premier B02	2	FC Los Angeles Black B02	0	SCDL FI1 U11	1.96	1.78
19301	2013-11-24	CZ Elite Zein B02	0	FC Los Angeles Black B02	2	SCDL FI1 U11	1.28	2.80
18734	2013-11-17	Santa Barbara SC White B02	2	FC Los Angeles Black B02	0	SCDL FI1 U11	2.29	1.16
18400	2013-11-16	FC Los Angeles Black B02	0	Exiles SC Black B02	5	SCDL FI1 U11	1.17	2.23
17176	2013-11-03	FC Los Angeles Black B02	0	Real So Cal White B02	3	SCDL FI1 U11	0.40	2.80
16639	2013-11-02	LA Galaxy South Bay Gold B02	4	FC Los Angeles Black B02	0	SCDL FI1 U11	2.47	0.55
16186	2013-10-27	Arsenal FC B02	1	FC Los Angeles Black B02	2	SCDL FI1 U11	2.19	1.11
15763	2013-10-26	FC Los Angeles Black B02	1	Santa Clarita Valley SC Yellow B02	2	SCDL FI1 U11	1.73	2.45
14823	2013-10-19	FC Golden State White B02	0	FC Los Angeles Black B02	11	SCDL FI1 U11	0.41	5.47
12741	2013-10-05	FC Los Angeles Black B02	2	Beach FC South Bay Black B02	2	SCDL FI1 U11	1.30	1.68
12276	2013-09-29	FC Los Angeles Black B02	4	TVSA Hawks Academy B02	4	SoCal DL Fall Showcase Flight 1 U11	1.03	1.61
12288	2013-09-29	FC Los Angeles Black B02	0	Strikers FC Irvine B02	6	SoCal DL Fall Showcase Flight 1 U11	0.58	3.86
10856	2013-09-21	FC Los Angeles Black B02	1	CZ Elite Zein B02	0	SCDL FI1 U11	2.80	1.28
9887	2013-09-14	FC Los Angeles Black B02	0	FRAM Premier B02	0	SCDL FI1 U11	1.78	1.96
9429	2013-09-08	Exiles SC Black B02	0	FC Los Angeles Black B02	2	SCDL FI1 U11	2.23	1.17
8943	2013-09-07	Santa Barbara SC White B02	2	FC Los Angeles Black B02	1	SCDL FI1 U11	2.29	1.16